

EX 2000 Series-Secure WAN Manager

A10 Networks 廣域網加速解決方案

EX 系列提供全面安全廣域網管理的解決方案，透過廣域網應用即時可視功能及一整套完整的廣域網加速功能解決廣域網線路的壅塞問題。EX 2000 的廣域網應用即時可視功能，讓公司內部可以經由掌握廣域網中應用與資源的使用者訊息對流量暴增等事件進行快速的檢查。EX 2000 先進的廣域網加速功能可以針對不同的應用賦予適當的優先級別，並透過線路負載平衡保證線路的擴展性與高可用性。所有這些功能均由 EX 2000 安全而高性能的平台來提供。



先進的廣域網加速功能

➤ 線路負載平衡 (Link Load Balancing)

基于應用類型的線路負載均衡與流量優先等級，可支援兩路或多路廣域網線路的多宿網路，增加頻寬，保證線路的備援與廣域網傳輸的優化。

➤ 頻寬管理 (Bandwidth Manager, QoS)

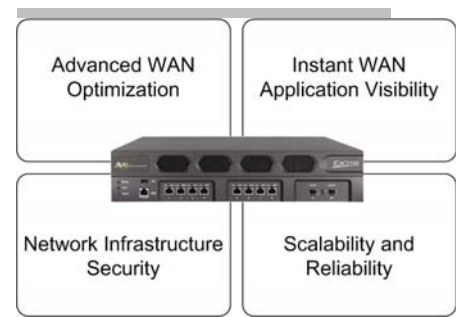
頻寬管理與策略支援包括100種以上的預設商業應用與總數高達512種的應用類型，可以提供自動流量分類，流量編整(rate shaping)與流量限制(rate limiting)，選擇性丟棄與優先級別標記。

➤ 站點對站點資料壓縮 (Compression, Site-to-Site)

可以改善廣域網傳輸時間並減少整體頻寬需求。

➤ 快取伺服器重定向 (Cache Redirection)

透過對入站流量的快取伺服器重定向來達到降低應用的響應時間。



廣域網應用即時可視性

➤ 基于身份的應用登錄可視性 (Identity-Based Application Visibility)

為多種即時通信(IM)，檔案傳輸，及電子郵件等通過廣域網路的應用提供具備身份訊息的活動紀錄。

➤ 基于身份的頻寬報告 (Identity-Based Bandwidth Reports)

對超過100種以上的商業應用提供基于身份的Top Users報表以便能更有效追蹤網路活動幫助偵錯及滿足法規的要求。

EX 2000 Series-Secure WAN Manager

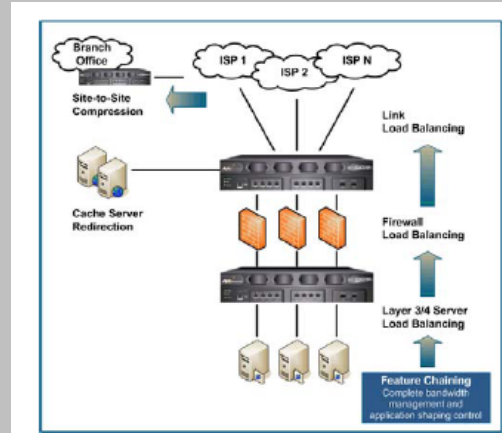
網路基礎架構的安全功能

➤ 網路入侵防禦 (Network IPS)

偵測網路異常，提供及時駭客攻擊保護，包括：DDOS分散式阻斷服務攻擊，連接埠掃描攻擊(port scan)，address sweep，協定不當使用攻擊(protocol misuse)，製造錯誤格式封包攻擊(malformed packets)等。

➤ 防火牆負載均衡 (Firewall Load Balancing)

將流量分散至兩組或多組防火牆、入侵防禦設備、或其他安全設備上，以增加容量，擴展性，與備援能力。



高擴展性與穩定性

➤ 對稱式多重處理器結構

(Symmetric MultiProcessing, SMP)

透過高效、特殊設計的SMP結構提供高達2G的總輸出量及超過100種以上商業應用的流量編整與流量限制能力。

Type	Date/Time	User Name	App User Name	Source IP	Destination IP
yim/logout	Oct 27 17:13:32	cparker	yardbird829	192.168.43.161	216.155.193.141
yim/logout	Oct 27 17:13:29	mtwyer	bones1211	192.168.43.180	216.155.193.142
yim/logout	Oct 27 14:01:40	srollins	sonny0907	192.168.43.165	216.155.193.174
yim/logout	Oct 27 13:59:07	srollins	sonny0907	192.168.43.165	216.155.193.174
msnrm/logout	Oct 27 10:01:26	ocherry	denc_msn1936	192.168.43.181	192.168.230.81
yim/logout	Oct 27 10:01:13	ocherry	denc_yim1936	192.168.43.181	216.155.193.181
yim/logout	Oct 27 09:27:10	cparker	yardbird829	192.168.43.161	216.155.193.141
aim/logout	Oct 27 09:04:57	gevans	arranger1912	192.168.43.151	205.188.179.233
yim/logout	Oct 27 08:48:09	tmonk	mrmonk	192.168.43.174	216.155.193.149
yim/logout	Oct 27 08:44:42	tmonk	mrmonk	192.168.43.174	216.155.193.149

➤ 彈性的配置模式

(Flexible Deployment Options)

支援透通或路由兩種配置模式，彈性化的端口選擇，方便與既有的網路環境整合。

➤ 多重功能整合 (Consolidated Functionality)

結合主要的廣域網加速，安全及監控技術於一體，簡化廣域網流量管理的工作。

➤ 簡化管理 (Simplified Management)

EX 2000系列可經由直觀易用的GUI圖形界面，及符合業界標準的CLI界面進行配置與監控。

➤ 高可用度 (High Availability)

支援RAID-1備份硬碟，先進的備份電源供應，及可抽換的風扇組，為服務的高可用性提供保障，同時也支援跨機箱的故障切換及HA備援。

EX 2000 Series-Secure WAN Manager

EX 2000 Series Features

» Bandwidth Manager

- Top Traffic Usage Reporting
- Identity Based for High Visibility
- 100+ Application Classes Supported
 - ♦ VoIP - H323, Megaco, MGCP, RTCP, SIP, Skinny, Skype, T120, Vonage
 - ♦ Security - ISAKMP, Socks, SSL
 - ♦ Session - CVS, Login, MAPTIP, REXEC, RTelnet, SSH, Telnet, TelnetS, Who
 - ♦ P2P - Bit Torrent, eDonkey, eMule, Gnutella
 - ♦ Multimedia - Abacast, CNNrtsp, iTunes, Motion, MSMMMS, Quicktime, RTP, RTSP, Shoutcast
 - ♦ Messaging - AIM, YIM, MSNIM, GTalk, IRC, IRCs
 - ♦ File Transfer - Netware, CIFS, NetBios, NFS, Rsync, TFTP
 - ♦ Email - BIFF, IMAP, POP3, SMTP
 - ♦ Directory Service and Data Base - MSSQL, Oracle, Bootp, CRS, DNS, Finger, Ident, Kerberos, LDAP, Radius, RRP, TACACS, Whois
 - ♦ Others - AURP, Ariel, BGP, Day Time, DHCP, Echo, FTP, Gopher, HTTP, IPP, NNTP, NTP, Printer, Router, RPC2Portmap, Shell, SNMP, Sun RPC, Syslog, Test, Time, UUCP
- Rate Shaping
 - ♦ Minimum Rate, Maximum Rate, Priority, Configurable Queuing, DSCP Marking
- Rate Limiting
 - ♦ Rate based conform or exceed
- QoS
 - ♦ Pre-defined and user configurable traffic classes
 - ♦ Hierarchical policies for traffic classes
 - ♦ Flexible binding of policies to interfaces

» Traffic Optimization

- Load Balance by Application Type
- Link Load Balancing
 - ♦ Round Robin
 - ♦ Weighted Round Robin
 - ♦ Least Connection
 - ♦ Weighted Least
 - ♦ Bandwidth Usage
 - ♦ Round Trip Time
- Firewall Load Balancing
 - ♦ Round Robin
 - ♦ Weighted Round Robin
 - ♦ Least Connection
 - ♦ Weighted Least Connection
- Site-to-Site Compression
 - ♦ Packet based compression
 - ♦ Optimize traffic transfer across WAN link
 - ♦ Reduce traffic congestion by up to 50%
- Transparent Cache Redirection
 - ♦ Round Robin
 - ♦ Weighted Round Robin
 - ♦ Least Connection
 - ♦ Weighted Least Connection

» IPS Anomaly Protection

- DDoS attacks
- ICMP based attacks
- IP based attacks
- TCP/UDP based attacks

» Identity Based Application Visibility

- Application Logging and Reporting (IP or ID based)
 - ♦ File Transfer – FTP, NFS, CIFS
 - ♦ Mail - SMTP, POP3
 - ♦ Instant Messaging – Yahoo, AOL, MSN
 - ♦ External ID to internal ID
 - ♦ Integration with IDSentries for IP-to-ID

» Layer 2 and Layer 3 Support

- L3 Routing Protocols
 - ♦ RIP2
 - ♦ OSPF
 - ♦ Static Route
- L2 Transparent Mode

» Management

- Industry standard Command Line Interface (CLI)
- Intuitive Graphical User Interface (GUI)
- Localized for Chinese and Japanese
- SSH
- Telnet

» High Availability

- Active/Standby
- Hot swappable fan
- Redundant power supply
- Dual hard drives with RAID 1 support

EX 2000 Series Hardware Summary

» Processors

- Dual Xeon

» Interfaces

- 8 x 1000BaseT (Gigabit over copper) + 2 SFP Fiber Ports
- 12 x 1000BaseT (Gigabit over copper)
- Configurable management Ethernet port
- 1 x RS-232 Serial Console Port

» Power Supply

- Redundant Power Supply with smart fan
- AC input voltage 100 to 240 VAC
- Frequency 50 to 60Hz
- 460 W DC each Removable

» Fan

- Removable Smart Fan

» Flash Memory

- 128M

» Hard Drives

- Dual 160G or higher capacity hard drives
- RAID 1
- Removable

» Regulatory Certification

- FCC Class A, UL, CE, TUV, CB, VCCI

» Standard Warranty

- 90-day Hardware & Software